

DAFTAR HARGA PRODUK RUCIKA FITTING

LEBIH DARI 350 VARIAN FITTING uPVC
TERLENGKAP DI INDONESIA



**CALCIUM ZINC
TANPA TIMBAL**

FITTING RUCIKA STANDARD JIS K - 6743 UNTUK APLIKASI AIR BERSIH BERTEKANAN

Clean Out (AW)



DN		ISI / BOX	HARGA / PCS
mm	inch		
50	2"	36	Rp. 14.100,-
75	3"	16	Rp. 31.000,-
100	4"	18	Rp. 51.500,-
150	6"	2	Rp. 134.900,-

UNION SOCKET (AW)



DN		ISI / BOX	HARGA / PCS
mm	inch		
16	1/2"	110	Rp. 32.600,-
20	3/4"	72	Rp. 39.900,-
25	1"	54	Rp. 54.800,-
35	1 1/4"	30	Rp. 90.900,-
40	1 1/2"	18	Rp. 123.900,-

FAUCET ELBOW with Metal Insert (AW)



DN		ISI / BOX	HARGA / PCS
mm	inch		
16	1/2"	200 (4@50PCS)	Rp. 10.400,-
16 x 20	1/2" x 3/4"	180	Rp. 15.100,-
20	3/4"	120 (4@30PCS)	Rp. 17.600,-

FAUCET SOCKET with Metal Insert (AW)



DN		ISI / BOX	HARGA / PCS
mm	inch		
16	1/2"	240 (4@60PCS)	Rp. 10.100,-
16 x 20	1/2" x 3/4"	205	Rp. 14.800,-
20	3/4"	160 (4@40PCS)	Rp. 16.700,-

ELBOW (AW)



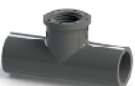
DN		ISI / BOX	HARGA / PCS
mm	inch		
16	1/2"	225	Rp. 2.500,-
20	3/4"	145	Rp. 3.200,-
25	1"	80	Rp. 4.700,-
35	1 1/4"	40	Rp. 8.100,-
40	1 1/2"	25	Rp. 11.200,-
50	2"	18	Rp. 16.900,-
65	2 1/2"	28	Rp. 26.700,-
75	3"	16	Rp. 44.400,-
100	4"	9	Rp. 82.100,-
125	5"	5	Rp. 124.200,-
150	6"	5	Rp. 207.500,-
200	8"	2	Rp. 469.800,-
250	10"	1	Rp. 627.900,-
300	12"	1	Rp. 932.700,-

VALVE SOCKET (AW)



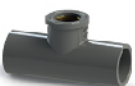
DN		ISI / BOX	HARGA / PCS
mm	inch		
16 x 1/2"	1/2"	450	Rp. 1.700,-
20 x 1/2"	1/2" x 3/4"	250	Rp. 2.700,-
16 x 3/4"	3/4" x 1/2"	285	Rp. 2.400,-
20 x 3/4"	3/4"	320	Rp. 2.500,-
16 x 1"	1" x 1/2"	200	Rp. 2.700,-
20 x 1"	1" x 3/4"	175	Rp. 2.800,-
25 x 1"	1"	175	Rp. 3.200,-
35 x 1 1/4"	1 1/4"	100	Rp. 5.700,-
40 x 1 1/2"	1 1/2"	60	Rp. 7.800,-
50 x 2"	2"	40	Rp. 11.300,-
65 x 2 1/2"	2 1/2"	54	Rp. 12.600,-
75 x 3"	3"	48	Rp. 26.200,-
100 x 4"	4"	18	Rp. 46.200,-

FAUCET TEE (AW)



DN		ISI / BOX	HARGA / PCS
mm	inch		
16 x 1/2"	1/2"	140	Rp. 4.100,-
20 x 1/2"	1/2" x 3/4"	100	Rp. 4.300,-
20 x 3/4"	3/4"	85	Rp. 4.600,-

FAUCET TEE with Metal Insert (AW)



DN		ISI / BOX	HARGA / PCS
mm	inch		
16 x 1/2"	1/2"	140	Rp. 16.300,-
20 x 1/2"	1/2" x 3/4"	110	Rp. 16.900,-
20 x 3/4"	3/4"	85	Rp. 29.400,-

FAUCET ELBOW (AW)



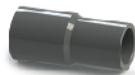
DN		ISI / BOX	HARGA / PCS
mm	inch		
16 x 1/2"	1/2"	200	Rp. 2.500,-
20 x 1/2"	1/2" x 3/4"	175	Rp. 2.800,-
20 x 3/4"	3/4"	130	Rp. 3.700,-
25 x 1"	1"	85	Rp. 5.300,-

UNION THREAD (AW)



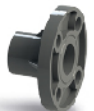
DN		ISI / BOX	HARGA / PCS
mm	inch		
16	1/2"	110	Rp. 32.600,-
20	3/4"	72	Rp. 39.900,-
25	1"	54	Rp. 54.800,-
35	1 1/4"	30	Rp. 90.900,-
40	1 1/2"	18	Rp. 123.900,-

REDUCING SOCKET (AW)



DN		ISI / BOX	HARGA / PCS
mm	inch		
20 x 16	3/4" x 1/2"	225	Rp. 2.700,-
25 x 16	1" x 1/2"	215	Rp. 2.800,-
25 x 20	1" x 3/4"	150	Rp. 3.600,-
35 x 16	1 1/4" x 1/2"	110	Rp. 3.900,-
35 x 20	1 1/4" x 3/4"	110	Rp. 4.600,-
35 x 25	1 1/4" x 1"	110	Rp. 5.300,-
40 x 16	1 1/2" x 1/2"	72	Rp. 5.700,-
40 x 20	1 1/2" x 3/4"	65	Rp. 6.000,-
40 x 25	1 1/2" x 1"	65	Rp. 7.300,-
40 x 35	1 1/2" x 1 1/4"	45	Rp. 8.200,-
50 x 16	2" x 1/2"	45	Rp. 8.500,-
50 x 20	2" x 3/4"	45	Rp. 9.100,-
50 x 25	2" x 1"	40	Rp. 10.000,-
50 x 35	2" x 1 1/4"	45	Rp. 11.600,-
50 x 40	2" x 1 1/2"	40	Rp. 12.400,-
65 x 40	2 1/2" x 1 1/2"	20	Rp. 17.900,-
65 x 50	2 1/2" x 2"	20	Rp. 19.400,-
75 x 20	3" x 3/4"	20	Rp. 14.400,-
75 x 25	3" x 1"	16	Rp. 14.900,-
75 x 35	3" x 1 1/4"	16	Rp. 18.200,-
75 x 40	3" x 1 1/2"	16	Rp. 20.200,-
75 x 50	3" x 2"	16	Rp. 21.600,-
75 x 65	3" x 2 1/2"	12	Rp. 32.100,-
100 x 40	4" x 1 1/2"	18	Rp. 52.800,-
100 x 50	4" x 2"	18	Rp. 57.400,-
100 x 65	4" x 2 1/2"	18	Rp. 58.600,-
100 x 75	4" x 3"	18	Rp. 61.300,-
125 x 75	5" x 3"	9	Rp. 83.600,-
125 x 100	5" x 4"	10	Rp. 92.400,-
150 x 75	6" x 3"	5	Rp. 105.300,-
150 x 100	6" x 4"	5	Rp. 114.800,-
150 x 125	6" x 5"	5	Rp. 120.200,-
200 x 100	8" x 4"	4	Rp. 206.300,-
200 x 125	8" x 5"	2	Rp. 221.500,-
200 x 150	8" x 6"	2	Rp. 235.200,-
250 x 200	10" x 8"	2	Rp. 411.100,-

FLANGE (AW)



DN		ISI / BOX	HARGA / PCS
mm	inch		
50	2"	31	Rp. 33.500,-
65	2 1/2"	15	Rp. 43.700,-
75	3"	15	Rp. 51.800,-
100	4"	12	Rp. 85.500,-
150	6"	8	Rp. 195.000,-

PLUG (AW)



DN		ISI / BOX	HARGA / PCS
mm	inch		
16	1/2"	1200 (6@200pcs)	Rp. 1.400,-
20	3/4"	700 (7@100pcs)	Rp. 1.700,-
25	1"	575	Rp. 1.900,-

DOUBLE NIPPLE (AW)



DN		ISI / BOX	HARGA / PCS
mm	inch		
16	1/2"	560	Rp. 1.400,-
20	3/4"	335	Rp. 1.700,-
25	1"	220	Rp. 2.800,-

SOCKET (AW)



DN		ISI / BOX	HARGA / PCS
mm	inch		
16	½"	300	Rp. 2.200,-
20	¾"	200	Rp. 2.600,-
25	1"	100	Rp. 3.800,-
35	1¼"	64	Rp. 6.300,-
40	1½"	40	Rp. 9.100,-
50	2"	25	Rp. 14.000,-
65	2½"	40	Rp. 23.300,-
75	3"	32	Rp. 33.500,-
100	4"	12	Rp. 66.100,-
150	6"	4	Rp. 139.100,-
200	8"	4	Rp. 280.800,-
250	10"	2	Rp. 444.700,-

CAP (AW)



DN		ISI / BOX	HARGA / PCS
mm	inch		
16	½"	500	Rp. 1.500,-
20	¾"	400	Rp. 1.700,-
25	1"	250	Rp. 2.600,-
35	1¼"	128	Rp. 4.100,-
40	1½"	84	Rp. 7.000,-
50	2"	54	Rp. 8.100,-
65	2½"	20	Rp. 16.600,-
75	3"	48	Rp. 25.000,-
100	4"	18	Rp. 52.300,-
150	6"	8	Rp. 89.700,-
200	8"	3	Rp. 175.900,-

TEE (AW)



DN		ISI / BOX	HARGA / PCS
mm	inch		
16	½"	150	Rp. 3.200,-
20 x 16	¾" x ½"	100	Rp. 4.300,-
20	¾"	100	Rp. 4.300,-
25 x 16	1" x ½"	65	Rp. 6.300,-
25 x 20	1" x ¾"	65	Rp. 6.500,-
25	1"	60	Rp. 6.900,-
35 x 16	1¼" x ½"	45	Rp. 9.100,-
35 x 20	1¼" x ¾"	45	Rp. 9.800,-
35 x 25	1¼" x 1"	35	Rp. 11.000,-
35	1¼"	30	Rp. 11.300,-
40 x 16	1½" x ½"	25	Rp. 12.600,-
40 x 20	1½" x ¾"	24	Rp. 12.600,-
40 x 25	1½" x 1"	24	Rp. 13.500,-
40 x 35	1½" x 1¼"	20	Rp. 15.000,-
40	1½"	20	Rp. 15.000,-
50 x 16	2" x ½"	17	Rp. 15.100,-
50 x 20	2" x ¾"	15	Rp. 15.300,-
50 x 25	2" x 1"	15	Rp. 15.900,-
50 x 35	2" x 1¼"	40	Rp. 21.700,-
50 x 40	2" x 1½"	12	Rp. 21.800,-
50	2"	30	Rp. 23.800,-
65 x 40	2½" x 1½"	6	Rp. 36.100,-
65 x 50	2½" x 2"	17	Rp. 36.300,-
65	2½"	16	Rp. 38.800,-
75 x 20	3" x ¾"	20	Rp. 32.300,-
75 x 25	3" x 1"	18	Rp. 33.300,-
75 x 35	3" x 1¼"	18	Rp. 37.300,-
75 x 40	3" x 1½"	16	Rp. 39.100,-
75 x 50	3" x 2"	20	Rp. 42.100,-
75 x 65	3" x 2½"	10	Rp. 48.100,-
75	3"	12	Rp. 54.800,-
100 x 40	4" x 1½"	8	Rp. 83.700,-
100 x 50	4" x 2"	6	Rp. 84.500,-
100 x 65	4" x 2½"	7	Rp. 100.300,-
100 x 75	4" x 3"	6	Rp. 102.600,-
100	4"	5	Rp. 109.400,-
125 x 75	5" x 3"	4	Rp. 145.200,-
125 x 100	5" x 4"	6	Rp. 149.100,-
125	5"	5	Rp. 192.800,-
150 x 50	6" x 2"	3	Rp. 217.300,-
150 x 75	6" x 3"	2	Rp. 241.500,-
150 x 100	6" x 4"	2	Rp. 251.800,-
150 x 125	6" x 5"	4	Rp. 272.400,-
150	6"	3	Rp. 274.900,-
200	8"	2	Rp. 569.600,-

Y - BRANCH (AW)



DN		ISI / BOX	HARGA / PCS
mm	inch		
50	2"	20	Rp. 37.200,-
65 x 50	2½" x 2"	17	Rp. 48.200,-
65	2½"	10	Rp. 52.800,-
75 x 50	3" x 2"	11	Rp. 56.600,-
75	3"	10	Rp. 80.500,-
100 x 50	4" x 2"	7	Rp. 101.600,-
100 x 75	4" x 3"	6	Rp. 115.600,-
100	4"	4	Rp. 169.500,-
150 x 75	6" x 3"	2	Rp. 298.000,-
150 x 100	6" x 4"	4	Rp. 319.900,-
200 x 100	8" x 4"	3	Rp. 497.200,-
200	8"	2	Rp. 1.433.900,-

45° ELBOW (AW)



DN		ISI / BOX	HARGA / PCS
mm	inch		
25	1"	90	Rp. 5.300,-
35	1¼"	48	Rp. 9.100,-
40	1½"	27	Rp. 11.400,-
50	2"	44	Rp. 19.300,-
65	2½"	24	Rp. 29.400,-
75	3"	18	Rp. 46.300,-
100	4"	18	Rp. 80.200,-
125	5"	4	Rp. 118.300,-
150	6"	4	Rp. 228.800,-
200	8"	2	Rp. 491.400,-
250	10"	1	Rp. 991.700,-

FAUCET SOCKET (AW)



DN		ISI / BOX	HARGA / PCS
mm	inch		
16 x ½"	½"	300	Rp. 2.200,-
20 x ½"	½" x ¾"	200	Rp. 2.600,-
20 x ¾"	¾"	180	Rp. 2.800,-
25 x ½"	½" x 1"	165	Rp. 2.800,-
25 x ¾"	¾" x 1"	150	Rp. 3.500,-
16 x 1"	1" x ½"	140	Rp. 3.500,-
20 x 1"	1" x ¾"	130	Rp. 3.700,-
25 x 1"	1"	120	Rp. 4.600,-
35 x 1¼"	1¼"	60	Rp. 6.900,-
40 x 1½"	1½"	40	Rp. 9.100,-
50 x 2"	2"	25	Rp. 11.300,-
65 x 2½"	2½"	12	Rp. 11.800,-
75 x 3"	3"	8	Rp. 28.400,-
100 x 4"	4"	18	Rp. 55.500,-

LARGE RADIUS TEE (AW)



DN		ISI / BOX	HARGA / PCS
mm	inch		
40	1½"	20	Rp. 13.000,-
50 x 40	2" x 1½"	8	Rp. 23.000,-
50	2"	6	Rp. 31.500,-
65 x 40	2½" x 1½"	6	Rp. 36.100,-
65 x 50	2½" x 2"	15	Rp. 42.500,-
65	2½"	14	Rp. 44.800,-
75 x 50	3" x 2"	14	Rp. 55.300,-
75	3"	8	Rp. 60.300,-
100 x 40	4" x 1½"	7	Rp. 91.300,-
100 x 50	4" x 2"	15	Rp. 105.300,-
100 x 65	4" x 2½"	6	Rp. 127.100,-
100 x 75	4" x 3"	4	Rp. 148.200,-
100	4"	7	Rp. 177.300,-
125 x 75	5" x 3"	4	Rp. 178.800,-
125 x 100	5" x 4"	6	Rp. 209.400,-
125	5"	2	Rp. 251.800,-
150 x 75	6" x 3"	5	Rp. 283.800,-
150 x 100	6" x 4"	5	Rp. 336.900,-
150	6"	3	Rp. 377.400,-
200 x 100	8" x 4"	2	Rp. 528.100,-
200 x 150	8" x 6"	2	Rp. 673.200,-
200	8"	2	Rp. 783.700,-

STOP KERAN (AW)



DN		ISI / BOX	HARGA / PCS
mm	inch		
16	½"	48	Rp. 20.500,-

FITTING RUCIKA STANDARD JIS K - 6739 UNTUK APLIKASI AIR KOTOR & BUANGAN

SOCKET (D - DS)



mm	DN		ISI / BOX	HARGA / PCS
	inch			
35	1¼"		200	Rp. 2.300,-
40	1½"		115	Rp. 2.700,-
50	2"		72	Rp. 4.000,-
65	2½"		100	Rp. 6.500,-
75	3"		60	Rp. 10.100,-
100	4"		30	Rp. 17.900,-
125	5"		30	Rp. 33.600,-
150	6"		18	Rp. 43.700,-
200	8"		8	Rp. 115.700,-
250	10"		8	Rp. 176.800,-

INCREASER (D - IN)



mm	DN		ISI / BOX	HARGA / PCS
	inch			
40 x 35	1½"	1¼"	90	Rp. 3.400,-
50 x 35	2"	1¼"	90	Rp. 4.300,-
50 x 40	2"	1½"	75	Rp. 4.500,-
65 x 40	2½"	1½"	45	Rp. 6.900,-
65 x 50	2½"	2"	45	Rp. 7.300,-
75 x 35	3"	1¼"	32	Rp. 6.300,-
75 x 40	3"	1½"	32	Rp. 8.700,-
75 x 50	3"	2"	32	Rp. 9.300,-
75 x 65	3"	2½"	28	Rp. 9.400,-
100 x 50	4"	2"	40	Rp. 15.600,-
100 x 65	4"	2½"	40	Rp. 17.300,-
100 x 75	4"	3"	35	Rp. 18.200,-
125 x 75	5"	3"	25	Rp. 32.300,-
125 x 100	5"	4"	20	Rp. 34.200,-
150 x 75	6"	3"	12	Rp. 50.300,-
150 x 100	6"	4"	10	Rp. 51.000,-
150 x 125	6"	5"	10	Rp. 64.900,-
200 x 100	8"	4"	8	Rp. 108.900,-
200 x 150	8"	6"	4	Rp. 112.900,-

ELBOW (D - DL)



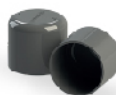
mm	DN		ISI / BOX	HARGA / PCS
	inch			
35	1¼"		90	Rp. 3.400,-
40	1½"		60	Rp. 4.300,-
50	2"		100	Rp. 7.000,-
65	2½"		45	Rp. 11.200,-
75	3"		30	Rp. 16.300,-
100	4"		15	Rp. 32.300,-
125	5"		15	Rp. 79.200,-
150	6"		10	Rp. 94.200,-
200	8"		3	Rp. 207.400,-
250	10"		2	Rp. 412.800,-
300	12"		1	Rp. 624.100,-

LARGE RADIUS ELBOW (D - LL)



mm	DN		ISI / BOX	HARGA / PCS
	inch			
35	1¼"		60	Rp. 5.300,-
40	1½"		40	Rp. 8.000,-
50	2"		20	Rp. 11.400,-
65	2½"		30	Rp. 16.700,-
75	3"		18	Rp. 25.500,-
100	4"		8	Rp. 53.100,-
125	5"		5	Rp. 95.800,-
150	6"		6	Rp. 159.400,-

CAP (D)



mm	DN		ISI / BOX	HARGA / PCS
	inch			
35	1¼"		144	Rp. 3.900,-
40	1½"		84	Rp. 5.300,-
50	2"		54	Rp. 7.300,-
65	2½"		38	Rp. 9.100,-
75	3"		60	Rp. 11.400,-
100	4"		30	Rp. 21.300,-

LARGE RADIUS DOUBLE TEE (D - WLT)



mm	DN		ISI / BOX	HARGA / PCS
	inch			
50 x 50	2"	2"	10	Rp. 19.500,-
75 x 50	3"	2"	15	Rp. 28.900,-
100 x 100	4"	4"	8	Rp. 99.100,-

LARGE RADIUS TEE (D - LT)



mm	DN		ISI / BOX	HARGA / PCS
	inch			
40 x 35	1½"	1¼"	35	Rp. 7.900,-
40	1½"		30	Rp. 8.000,-
50 x 40	2"	1½"	18	Rp. 11.400,-
50	2"		15	Rp. 15.600,-
65 x 40	2½"	1½"	10	Rp. 15.900,-
65 x 50	2½"	2"	30	Rp. 19.400,-
65	2½"		18	Rp. 24.300,-
75 x 50	3"	2"	20	Rp. 25.400,-
75 x 65	3"	2½"	16	Rp. 32.800,-
75	3"		15	Rp. 33.400,-
100 x 40	4"	1½"	15	Rp. 36.200,-
100 x 50	4"	2"	14	Rp. 39.200,-
100 x 75	4"	3"	8	Rp. 53.600,-
100	4"		6	Rp. 61.300,-
125 x 100	5"	4"	4	Rp. 105.700,-
150 x 75	6"	3"	5	Rp. 108.000,-
150 x 100	6"	4"	5	Rp. 134.500,-
150	6"		4	Rp. 198.600,-
200 x 100	8"	4"	3	Rp. 294.300,-
200 x 150	8"	6"	2	Rp. 328.800,-

TEE (D - DT)



mm	DN		ISI / BOX	HARGA / PCS
	inch			
35	1¼"		55	Rp. 4.500,-
40	1½"		40	Rp. 6.300,-
50	2"		65	Rp. 9.300,-
65 x 40	2½"	1½"	16	Rp. 11.900,-
65 x 50	2½"	2"	45	Rp. 14.400,-
65	2½"		32	Rp. 16.600,-
75 x 40	3"	1½"	36	Rp. 16.600,-
75 x 50	3"	2"	30	Rp. 19.200,-
75 x 65	3"	2½"	22	Rp. 21.300,-
75	3"		20	Rp. 24.900,-
100 x 40	4"	1½"	18	Rp. 29.800,-
100 x 50	4"	2"	15	Rp. 31.700,-
100 x 75	4"	3"	12	Rp. 37.200,-
100	4"		8	Rp. 42.500,-
125 x 75	5"	3"	8	Rp. 60.500,-
125 x 100	5"	4"	6	Rp. 72.000,-
125	5"		10	Rp. 75.400,-
150 x 100	6"	4"	8	Rp. 101.600,-
150	6"		6	Rp. 129.800,-
200 x 100	8"	4"	4	Rp. 138.000,-
200	8"		2	Rp. 269.400,-
250 x 200	10"	8"	2	Rp. 435.500,-

CLEAN OUT (D)



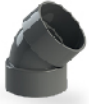
mm	DN		ISI / BOX	HARGA / PCS
	inch			
50	2"		90	Rp. 7.100,-
75	3"		80	Rp. 11.200,-
100	4"		36	Rp. 28.900,-

P-TRAP (D)



mm	DN		ISI / BOX	HARGA / PCS
	inch			
40	1½"		18	Rp. 15.600,-
50	2"		12	Rp. 16.400,-
75	3"		12	Rp. 34.900,-

45° ELBOW (D - 45 L)



mm	DN		ISI / BOX	HARGA / PCS
	inch			
35	1¼"		100	Rp. 3.200,-
40	1½"		75	Rp. 3.700,-
50	2"		100	Rp. 7.300,-
65	2½"		60	Rp. 9.800,-
75	3"		35	Rp. 15.900,-
100	4"		15	Rp. 26.900,-
125	5"		15	Rp. 51.200,-
150	6"		10	Rp. 99.100,-
200	8"		4	Rp. 218.600,-
250	10"		2	Rp. 304.300,-
300	12"		1	Rp. 478.200,-

Y - BRANCH (D - Y)



mm	DN		ISI / BOX	HARGA / PCS
	inch			
40 x 35	1½"	1¼"	40	Rp. 7.600,-
40	1½"		30	Rp. 9.000,-
50 x 35	2"	1¼"	24	Rp. 9.100,-
50	2"		18	Rp. 14.000,-
65 x 50	2½"	2"	27	Rp. 16.900,-
65	2½"		25	Rp. 19.400,-
75 x 50	3"	2"	20	Rp. 24.500,-
75	3"		15	Rp. 30.000,-
100 x 50	4"	2"	15	Rp. 38.200,-
100 x 75	4"	3"	8	Rp. 53.700,-
100	4"		6	Rp. 62.400,-
125 x 100	5"	4"	9	Rp. 90.000,-
150 x 75	6"	3"	8	Rp. 131.200,-
150 x 100	6"	4"	5	Rp. 156.400,-
150	6"		6	Rp. 194.400,-
200 x 100	8"	4"	3	Rp. 309.800,-
200 x 150	8"	6"	2	Rp. 365.000,-

CLEAN OUT CAP (D - CO)



mm	DN		ISI / BOX	HARGA / PCS
	inch			
100	4"		27	Rp. 29.500,-

*Harga sudah termasuk PPN 11%
DN: Diameter Nominal

Efektif : 01 Juli 2024